



MONTHLY MEMBERSHIP PROGRESS REPORT

District 27 B1

Results as of: 4/30/2017

GMT: Judy Hankom

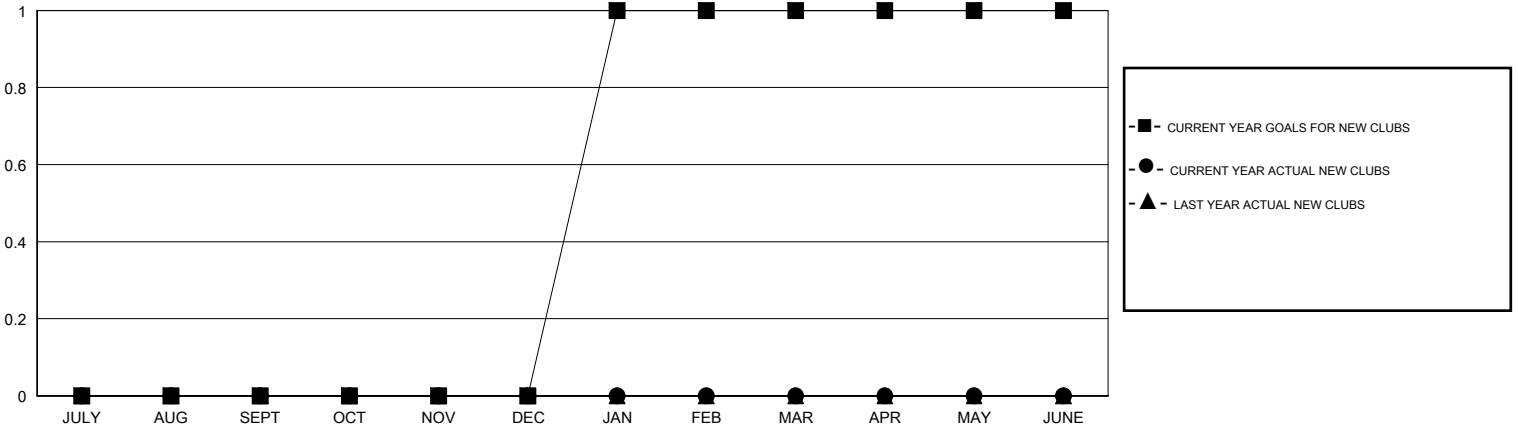
LOCATION WISCONSIN

GMT CA

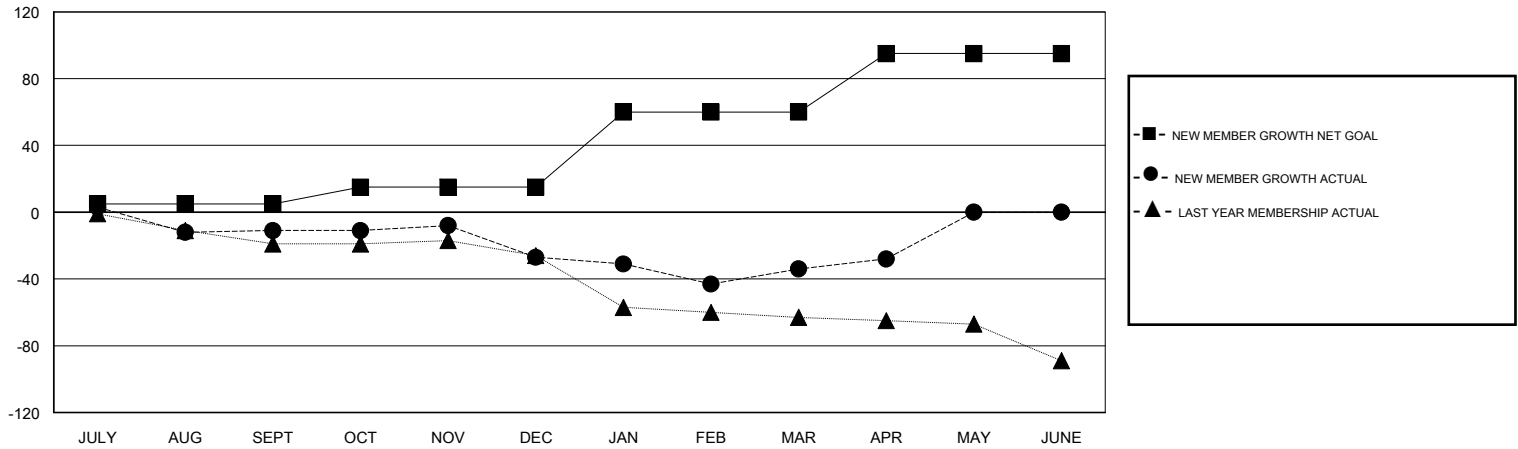
| Clubs | | | |
|-----------------------|---------------|-----------|---------------|
| RESULTS FOR 2016-2017 | | | |
| QUARTER | NEW CLUB GOAL | NEW CLUBS | DROPPED CLUBS |
| JULY/AUG/SEPT | 0 | 0 | 0 |
| OCT/NOV/DEC | 0 | 0 | 1 |
| JAN/FEB/MAR | 1 | 0 | 1 |
| APR/MAY/JUNE | 0 | 0 | 0 |

| Members | | | |
|-----------------------|--|--|--|
| RESULTS FOR 2016-2017 | | | |
| QUARTER | NEW MEMBER GROWTH NET GOAL (not reinstated or transfers) | NEW MEMBER GROWTH ACTUAL (not reinstated or transfers) | DROPPED MEMBERS ACTUAL (including transfers) |
| JULY/AUG/SEPT | 5 | 43 | 54 |
| OCT/NOV/DEC | 10 | 44 | 60 |
| JAN/FEB/MAR | 45 | 42 | 49 |
| APR/MAY/JUNE | 35 | 22 | 16 |

GOALS AND ACTUAL NEW CLUBS CUMULATIVE



GOALS AND ACTUAL MEMBERS CUMULATIVE



| | | |
|------------------------|---|-------------------------------------|
| DROPPED CLUBS: 2 | 46 CLUBS OF 70 ADDED 1 OR MORE NEW MEMBERS | <u>GENDER DISTRIBUTION</u> |
| | | MALE 1,577 (80.21%) |
| | | FEMALE 389 (19.79%) |
| <u>DROPPED MEMBERS</u> | CLICK HERE FOR CUMULATIVE MEMBERSHIP DATA | TOTAL FAMILY UNIT MEMBERS 304 |
| DECEASED 37 | | FAMILY MEMBERS PAYING HALF DUES 154 |
| CLUB CANCELLED 0 | | |
| OTHER 142 | | |
| TOTAL 179 | | |